



MISSISSIPPI IS HIRING A DEPUTY CHIEF MEDICAL EXAMINER

Photo by Lazy Lab Productions

The Office of the State Medical Examiner (OSME) for the state of Mississippi is hiring a Deputy Chief Medical Examiner for the headquarters office located near Jackson, MS, the state capital. **The annual salary is \$265,000.**

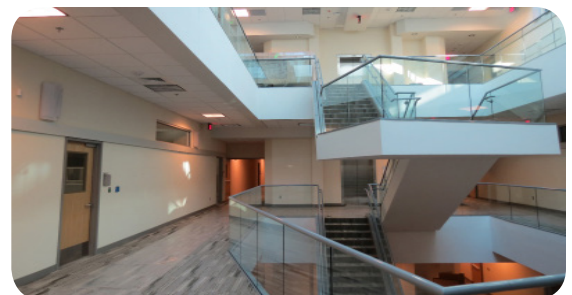
ABOUT THE OFFICE OF THE STATE MEDICAL EXAMINER

The OSME falls under the Mississippi Department of Public Safety. The office is co-located within and directly affiliated with the Mississippi Forensics Laboratory headquarters in a \$30 million state-of-the-art facility in Jackson, MS. There are three regional forensic laboratories throughout the state and one regional Gulf Coast Medical Examiner's Office located in Biloxi, MS. The OSME performs approximately 1,200 post-mortem examinations annually for all 82 counties and one reservation. The OSME is affiliated with the University of Mississippi Medical and Dental Schools.



FACILITY HIGHLIGHTS:

- + **Four Main Autopsy Stations**
each with a mounted 55" color monitor/computer for X-ray viewing and entering patient data
- + **FOBOS XR Forensic Body Scanner System**
used for full body radiology
- + **PACS Embedded Data Management Software**
- + **JusticeTrax Software**
evidence barcoding and final autopsy reporting
- + **NOMAD Pro2 Dental Imaging System**
with DEXIS Platinum Software System
- + **On-site Forensic Anthropology/Odontology**



Join us in the great state of MISSISSIPPI

26+ Art, Science, and
Historic Museums

30+ State & National Parks

17+ Campgrounds

2 International Airports

20+ Music Festivals, Film
Festivals, and More

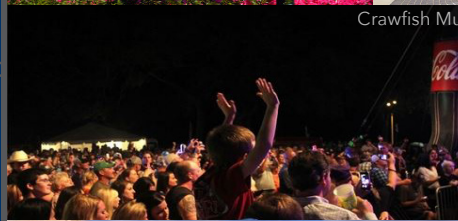
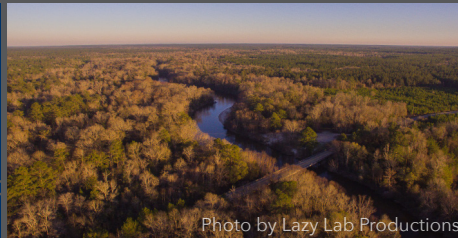
Home of the
MS Braves & Biloxi Shuckers

Mississippi State, Ole Miss,
& USM Sports

Less than 3 hours away
from New Orleans, LA

Less than 3 hours from the
Mississippi Gulf Coast

Less than 4 hours from
Memphis, TN



POSITION OPENING:

DEPUTY CHIEF MEDICAL EXAMINER

RESPONSIBILITIES

- Performing postmortem forensic examinations and autopsies
- Assisting in medicolegal death investigations
- Supervising the operational activities of the facility
- Testifying as an expert witness in court
- Other related duties as assigned

SALARY

\$265,000 per year

REQUIREMENTS

- Must be a physician (M.D. or D.O.) who has graduated from an accredited school of medicine or osteopathic medicine. Must possess a valid medical license.
- Must have completed an approved residency training in pathology at an accredited institution (fellowship in forensic pathology preferred).
- Must be board-certified in anatomic or forensic pathology through the American Board of Pathology (forensic pathology board-eligible candidates must obtain board certification within three years of hiring).
- Must submit state employment application and pass a thorough background check. ***H1B visa sponsorship with consideration given to green card sponsorship.***

BENEFITS

- State health care program
- Dental insurance program
- Vision insurance program
- Life insurance program
- State contribution to the Public Employees' Retirement System (PERS) of Mississippi (<http://www.pers.ms.gov/Pages/Home.aspx>)
- Personal leave
- Medical leave
- Accrued compensation time
- 10 paid state holidays

PLEASE CONTACT:

Staci Turner, M.D., Chief Medical Examiner, at sturner@mcl.ms.gov